

Pipe-Smoking Alien Crop Circle Analysis

I've been thinking about the Pipe-Smoking Alien Crop Circle off and on for the past six months. I felt there was something there, but didn't know what it was. A few days ago, it occurred to me what to check.

I've been involved with harmonics research for the past 25 years. When I say harmonics, I mean harmonics of the speed of light, gravity and the Earth's magnetic field. I worked with Bruce Cathie of New Zealand for 23 1/2 years until his death last year.

What does all this have to do with the crop circle? I found some harmonic connections to it that show some very interesting things.

Although most people have forgotten, the Ram actually spoke briefly about harmonics during a **Personal Assistance into a Greater Understanding** event on Saturday, April 2 and Friday, April 8, 1988. He then sent a runner to the school which is how I got involved with harmonics.

Brief Introduction to Harmonics

In order for you to understand this, I'll give you a very brief introduction to harmonics.

The simplest definition of a harmonic is that it is a **sub-multiple of a whole**.

To work in harmonics you have to follow some Rules of Harmonics and some Rules of Measurement. The Rules of Harmonics are that the system is based on 6 and 10 and zeros to the left or right of the decimal point are irrelevant. The Rules of Measurement are that you must use the nautical mile and a day based on 27 periods. What I mean by 27 periods is that you break a normal Earth day into 27 hours rather than 24. If you don't follow any of these rules, you won't see any of these relationships.

In the harmonic world, Gravity, the Speed of Light and the Earth's Magnetic Field are just mathematical conversions of one another. In fact, they have an inextricable mathematical relationship that shows how physical matter reality manifests itself in a double cycle of alternating pulses of matter and antimatter. This is a unification that can be shown in a simple table of values.

The Ram also talked about the pulse of matter and antimatter back in 1988 in the teaching called, **The Nature of Reality**, one of the four teachings of **The Ancient Schools of Wisdom**.

In harmonics, we find that Gravity and the Speed of Light have an inverse relationship to each other. When the value of one increases, the other decreases. In simplistic terms, this explains how a black hole works and a UFO flies.

In the physics textbooks, the maximum value for the Speed of Light is roughly 186,000 miles/sec. We have found that the theoretical maximum Speed of Light is actually 186,422.7272

miles/sec. Well, what kind of miles and what kind of seconds? It is statute miles and a second based on a 24 hour day. To work in harmonics, you have to convert the Speed of Light into nautical miles and a time factor based on a 27 hour day. When you do this, you get a maximum value for the Speed of Light of 144,000.

This value is the fabled number in the Book of Revelations. Also, if you are an Islamic terrorist and you martyr yourself, 72 virgins are supposed to be waiting for you in paradise. Well, $72 \times 2 = 144$. 144,000 and 144 are the same number in the harmonic world.

It's interesting to note that the Blue Star, or any five-pointed star is tuned to the speed of light. 360 divided by $5 = 72$ and $72 \times 2 = 144$.

Harmonics is a very cut and dry science. When you analyze a site, an ancient building or monument, the placement of some ruins, or even a modern facility, you follow the rules, apply the math and it either works out or it doesn't. You can't have an emotional attachment to any particular outcome. If you check something and you find a harmonic relationship, great. If you don't, you just move on to the next thing.

In 25 years of working with harmonics and having done probably a million calculations by hand, and billions by computer, I can definitively say one thing. When you analyze a site or structure, the harmonics are either there or they aren't there. **If they are there, it's never an accident.**

Harmonic Links

With the pipe-smoking alien, I found harmonic links to two very interesting places. But, what is a harmonic link?

With harmonics, you can analyze great circle distances, coordinates and measurements. All particle accelerators, some modern facilities, and many of the ancient ruins use harmonics either in their placement or in the physical dimensions of their structures. This is a very old science.

The shortest distance between two locations on the Earth's surface is the Great Circle distance. We used to treat the Earth as a sphere, but now we treat it as an ellipsoid. To be technically accurate, the Earth is an oblate spheroid as it's slightly flattened at the poles. We now use the WGS84 ellipsoid when we calculate great circle distances in our software as it gives the most accurate results. Incidentally, the WGS84 ellipsoid is what the Google Earth uses.

When you analyze the great circle distance between two locations (call it Location A and Location B) and find that it yields a harmonic, you have a harmonic link between the two. What this means depends on what the two locations are. Here are some examples:

1. Harmonic links can be used to link two locations together and combine their energies. For example, most major particle accelerators have harmonic links between them which allow them to combine their energies, thus having more power available for experiments.
2. If Location A is an active location (in use) and Location B is passive (no longer used), then a harmonic link would allow Location A to activate Location B and use it to its advantage.

3. A harmonic link could also allow Location A to communicate with Location B, without using the traditional methods.

The final thing I want you to know is that much of harmonics is derived from the equation, $E=mc^2$. Bruce found that he could substitute the m in the equation with another equation that was expressed all in terms of light or c . He then doubled the value of c in the equation and found another harmonic. He later found that many ancient structures were built according to these harmonics (the King's Chamber for example), and that certain scientists had been using this information in secret for years.

Here's what you should think about. If harmonics has been around since at least 2500 BC, which is when the pyramids were built, and a lot of harmonics is based on $E=mc^2$, then where did Einstein get that equation? Was Einstein a plagiarist? I don't think so. I think he just had access to some very deep levels of mind.

Harmonics of the Pipe-Smoker

Now that you have some background, I'll tell you what I found.

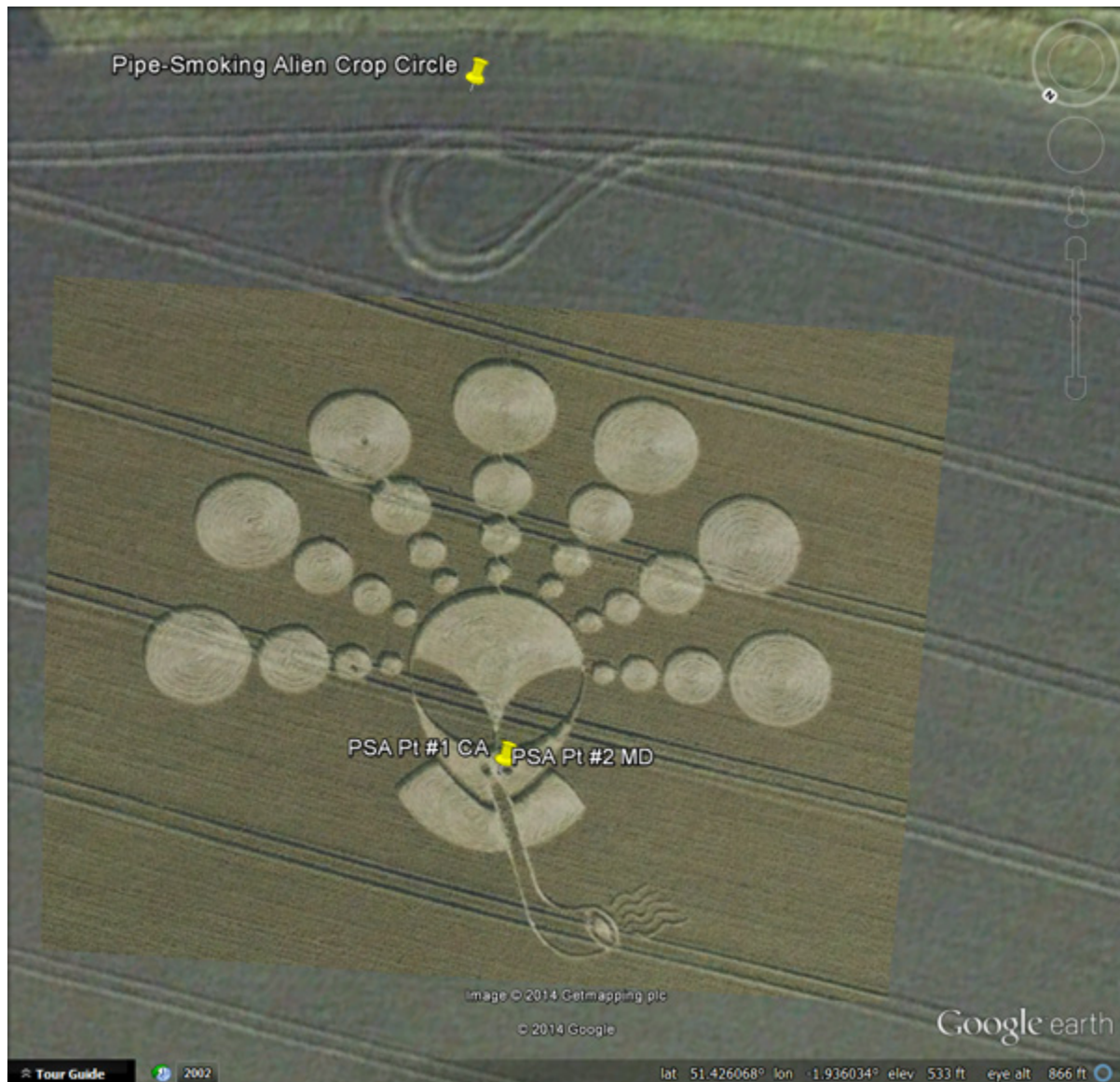
The Pipe-Smoking Alien Crop Circle was placed very accurately. I found this out by scouring the web and looking at all the photos I could find of the circle. I chose the photo that seemed like it was taken the most directly overhead. I then went to Google Earth and found the original location of the circle. The circle is said to have first appeared on July 27, 2011, but since then Google Earth has updated its satellite imagery and it is no longer shown.

Once I found the location, I scaled the image down and overlaid it on the site in Google Earth. I got it as close as I could by matching it to the original photographs I had found. The result is the screenshot below which shows the crop circle and the surrounding area.



Screenshot courtesy of Google Earth

This next screenshot shows a closer look at the crop circle.



Screenshot courtesy of Google Earth

As you can see in the above screenshot, I overlaid the image the best I could, but the lining up of the furrows is not exact for the ones in the middle of the crop circle. This is because the photo was not taken from directly overhead. Still, it's an accurate placement of the photo.

To find the harmonic links, I picked a coordinate in the middle of the crop circle and found the great circle distance between that coordinate and several other sites around the world. There were two sites that had harmonic links with the circle and these were two that I had been studying for a while. So, I wasn't too surprised.

If you ask people to name the most important archaeological sites in the world, you will undoubtedly hear Stonehenge and the Great Pyramids of Giza. However, I would disagree.

For the last two years, I've been studying two sites in Europe that have harmonic links to hundreds of sites around the world. Sites such as particle accelerators, modern facilities, Maya ruins, Aztec ruins, Inca ruins, other types of ruins, and sports stadiums throughout the world. These sites have different functions and come from different cultures but are still part of two vast harmonic networks. Why? Neither Bruce nor I had ever seen anything like this. This is unheard of, which is why the results of this work will probably be released in a future book. But, I'll give you a glimpse.

One of the harmonic links I found with the crop circle was with the ALICE station at CERN. The second harmonic link was with the Millennium Dome in London.

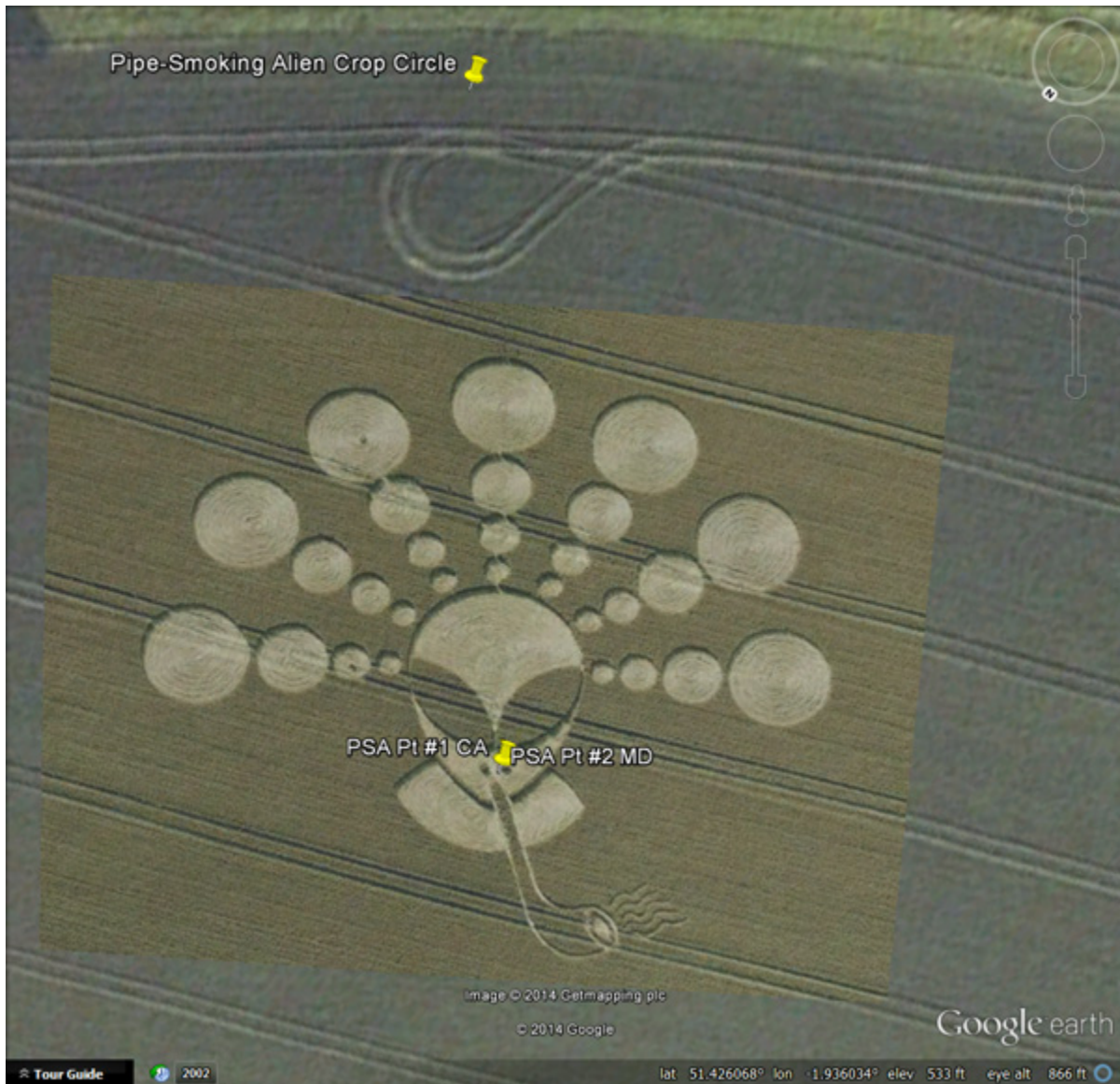
CERN is the world's largest particle accelerator and is a huge facility that employs thousands of scientists. The accelerator ring is actually underground and has a circumference of 27km. Scattered around the accelerator ring are various sites that house detectors. One of these detectors is ALICE, which is an acronym for A Large Ion Collider Experiment. The first components for the ALICE facility were built in 1995 and it was subsequently added to until it was integrated into the LHC and the first collisions were detected in 2010.

In a particle accelerator, particles move in opposite directions around the ring and are accelerated near the speed of light. At a certain point, they crash the particles together and see what smaller particles come out. They usually do this around one of the detectors. It's like two automobiles involved in a head-on collision. When they collide, parts come flying out everywhere.

The Millennium Dome, also known as the O2 Arena, is a concert hall. Yes, a place where they have concerts and other events. However, when you look at a photo of it, it looks like a transmitter. It's actually a collector and a transmitter. The facility opened in 1999 and it's interesting to note that the developers had to have this particular site. Many people had to relocate in order to make the site available for construction.

To summarize, the first components of the ALICE station were built in 1995 and the Millennium Dome opened in 1999, yet these facilities have harmonic links to structures going back to 2500 BC. How is that possible? The only explanation is that these sites have to be very ancient locations. I think the modern buildings were built on top of these sites because they knew of their history and wanted to take advantage of it. There is probably some kind of ancient technology underground at these locations that they wanted to gain control of in order to use. However, the possibility exists that they aren't in control of it. I understand part of the story, but not the full story.

I'll show the last screenshot again.



Screenshot courtesy of Google Earth

Disregard the placemark at the top of the screenshot. The placemarks (the yellow pushpins) in the center mark the coordinates where the two harmonic links meet. There are actually two pushpins there, one on top of the other, because that point is where the harmonic links to ALICE and the Millennium Dome meet within the crop circle.

Now, let's talk about The Grid. When I say the grid, I don't mean the electrical grid. I mean The Grid that the Ram has talked about many times over the years.

We have been able to plot the Grid over the entire Earth's surface since 2000 and have been able to calculate grid points since 1993.

Over time, we have found that the major resolutions of the grid are 30 nautical miles, 7.5 nautical miles, 6 nautical miles and to a lesser extent, 1 nautical mile. There are many minor resolutions after that. The grid is actually infinite and there are jillions and jillions of points which collectively make up the reality of the planet.

I plotted different grid resolutions and found that if I plotted a 7.5 second grid over the area, it resulted in the screenshot below.



Screenshot courtesy of Google Earth

It's interesting that the grid line passes through four of the circles in the crop circle. In fact, it lines up perfectly.

Conclusion

What does this all mean?

Obviously, the Ram knew what he was doing when he placed the crop circle at that location. It was placed too precisely for this to be an accident. The fact that he placed it within the two harmonic networks I mentioned earlier shows that once again when he does something, he does it on multiple levels.

I think he was sending us a message. We only had to look.

Rod Maupin
Rainier, WA
USA

Note: The calculations for the harmonic links appear on the following pages.

CERN ALICE & Pipe-Smoking Alien Crop Circle

CERN ALICE Station, Sergy, France

46.252137° N, 6.020212° E (Pt #4)

Pipe-Smoking Alien, Cherhill, UK

51.426355° N, -1.935369° W (actual)

51.42639159148714° N, -1.935435091018433° W (calculated)

Great Circle Distance

441.5039207169197' (actual)

441.50722955267958' (calculated)

Bearing 1

317.6031853841300° (actual)

Bearing 2

131.6034257266507° (actual)

131.6033740561926° (calculated)

GCD: 441.50722955267958'

/ $6^{28} = 7.189568215 \times 10^{-20}$

x 2 = **143791.3643 harmonic (Speed of Light - Gravity Acceleration)**

Millennium Dome & Pipe-Smoking Alien Crop Circle

Millennium Dome, London, UK

51.50306707252335° N, 0.003229616818565° E

Pipe-Smoking Alien, Cherhill, UK

51.426355° N, -1.935369° W (actual)

51.42639220149158° N, -1.935432572063149° W (calculated)

Great Circle Distance

72.65725865455594' (actual)

72.659460555269760' (calculated)

Bearing 1

267.1242085640074° (actual)

267.1261085640069° (calculated)

Bearing 2

85.60773255453015° (actual)

85.60958242962422° (calculated)

GCD: 72.659460555269760'

$$\times 6^{11} = 2.636063838 \times 10^{10}$$

Squared = **6.94883256 harmonic (Light Reciprocal)**

1/x = **143909.0655 harmonic (Speed of Light - Magnetic Field)**